



Reagents for Hospital Laboratories

PanReac AppliChem has a full range of products for histology, haematology and microbiology, which includes the most commonly used reagents in the process of preparing samples for examination under the microscope. With this range, all the stages of fixing, clearing, paraffin inclusion, staining and mounting are covered.

We include here a list of the main reagents used in Hospital Laboratories:

- **Clinical Pathology:** Hematology, Histopathology, Cytology, Routine Pathology.
- **Clinical Microbiology:** Bacteriology, Mycobacteriology, Virology, Mycology, Parasitology, Immunology, Serology.



DRYING AND CLEARING

Drying is the complete removal of water from the specimen or tissue sample so that it can be properly embedded in the inclusion media. This process is carried out by immersing tissue in a series of ethanol solutions of increasing concentrations until absolute alcohol. **Clearing** process is the replacement of the dehydrating agent with a substance miscible with the embedding medium to be used.



**Superior
dehydrating and
clearing processes
for a perfect sample
preparation**

Description	Code	Package
Ethanol absolute for clinical diagnosis * CE	251086.9914	5 L
Ethanol absolute pure *	141086.1214	5 L
Ethanol 99.8 % denatured with IPA, MEK and Bitrex pure *	147194.1214	5 L
Isoparaffin H (Substitute of Xylene) for clinical diagnosis CE	255069.2714	5 L
Xylene, mixture of isomers for clinical diagnosis CE	251769.2714	5 L

* Check availability in your country

FIXING 

CE IVD

Fixation interrupts the degradation processes after cell death, trying to preserve the architecture and composition of tissues and cells as closely as possible to how they were in the living organism.



Easy handling of formaldehyde for safer work. High Quality IVD Reagent

Description	Code	Package
Formaldehyde 3.7-4.0 % buffered to pH=7 and stabilized with methanol for clinical diagnosis	252931.9914	5 L
	252931.1315	10 L
	252931.1215	10 L
Histofix® Preservative ready to use for clinical diagnosis	256462.0905	45 x 10 ml
	256462.0955	44 x 20 ml
	256462.0962	45 x 30 ml
	256462.0961	45 x 40 ml
	256462.0967	24 x 75 ml
	256462.0944	12 x 200 ml
	256462.09149	10 x 600 ml

INCLUSION 

Embedding consists in replacing the water of the tissue by a liquid medium capable of solidifying under the appropriate temperature conditions, in order to provide the sample with adequate consistency and homogeneity to obtain very thin translucent sections by means of an instrument called a microtome.

Description	Code	Package
Paraffin M.P. 55-58°C plasticized + DMSO pellets for clinical diagnosis	256993.0933	6 x 1 kg
Paraffin Cleaner for clinical diagnosis	256876.3408	6 x 100 ml



Keep your microtome clean in the best conditions



Your preparations in the best paraffin CE IVD

MOUNTING 

Immersion media are liquids that are frequently natural oils and which have a defined refractive index. It is important that the refractive index (nD) is about 1.5, the figure for glass. This enables a homogeneous oil immersion to be achieved.

Description	Code	Package
Immersion Oil for clinical diagnosis	251002.1208	100 ml

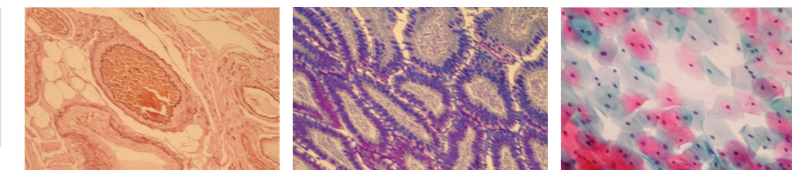


A homogeneous immersion oil for a perfect view CE IVD

STAINING 

Microscopy dyes are used mainly in histology, cytology and microbiology but also in other analytical techniques.

Stains specifically made for biological samples



Description	Application	Code	Package
Azur-Eosin-Methylene Blue solution according to Giemsa (slow) for clinical diagnosis	Differential blood staining; demonstration of blood parasites and protozoa	251338.1610	500 ml
Eosin Yellowish alcoholic solution 1% for clinical diagnosis	Solution for Hematoxylin-Eosin staining, in human and gynecological samples	256879.1210	500 ml
Gram-Hucker's Staining Kit (Droppers) for clinical diagnosis	Microbiology: for differentiation of gram positive and gram negative bacteria.	256649.0922	Kit
Harris Hematoxylin solution for clinical diagnosis	Citology-Histology: solution for Hematoxylin-Eosin staining, in human and gynaecological samples	253949.1611	1000 ml
Kit for Fast Staining in Haematology (Fast Panoptic) for clinical diagnosis	Haematology: characterization of leukocytes	254807.0922	Pack 3 x 500 ml
Mayer's Hematoxylin solution for clinical diagnosis	Nuclear staining for cytology	254766.1611	1000 ml
Papanicolaou's Solution EA 50 for clinical diagnosis	Cytology: cytoplasm staining	253594.1612	2.5 L
Papanicolaou's Solution OG 6 for clinical diagnosis	Cytology: cytoplasm staining of mature and keratinized cells	253892.1612	2.5 L



Azur-Eosin-Methylene Blue solution according to Giemsa (slow) for clinical diagnosis



Gram-Hucker's Staining Kit (Droppers) for clinical diagnosis



Kit for Fast Staining in Haematology (Fast Panoptic) for clinical diagnosis

SPECIAL APPLICATION

24-hour urine analysis is common for the detection and diagnosis of tumors, as well as for the formation of kidney stones. Because of this long sampling period, the urine must be stabilized. PanReac AppliChem offers vials with 10 ml of concentrated hydrochloric acid for this application.

Description	Code	Package
Hydrochloric Acid 10 mol/l (10N) volumetric solution	187051.0905	100 x 10 ml



Convenience and quick: vial ready for use with the adequate concentration



IP-049EN;201901



For more information see our brochure "Reagents for Hospitals" at https://www.itwreagents.com/download_file/brochures/A193/en/A193_en.pdf

IP-049EN

AppliChem GmbH
Ottoweg 4
DE-64291 Darmstadt
Germany
Phone +49 6151 9357 0
Fax +49 6151 9357 11
info.de@itwreagents.com

Nova Chimica Srl
Via G. Galilei, 47
I-20092 Cinisello Balsamo
(Milano) Italy
Phone +39 02 66045392
Fax +39 02 66045394
info.it@itwreagents.com

PanReac Química SLU
C/ Garraf 2, Polígono Pla de la Bruguera
E-08211 Castellar del Vallès
(Barcelona) Spain
Phone +34 937 489 400
Fax +34 937 489 401
info.es@itwreagents.com



www.itwreagents.com