



SESAME *Salmonella*®

DETECTION OF MOTILE *SALMONELLAE* IN HUMAN AND ANIMAL FOOD PRODUCTS
AND ENVIRONMENT SAMPLES OF PRODUCTION AREA

RELIABLE

Validated method by AFNOR Certification following the NF EN ISO 16140-2 standard

PERFORMANT

Excellent migration capacity of the agar which allows the detection of all motile *Salmonellae*

EASY

Reading of a clearly visible opaque halo corresponding to the migration area

RAPID

Negative screening in only 37 hours

SIMPLE AND ECONOMIC

1 enrichment + 1 plate and a fast test for possible confirmations



SESAME *Salmonella* TEST®

Method of detection of motile *Salmonella* spp. in human and animal food products (including primary production) and environment samples of production area



Validated by AFNOR Certification under the reference BKR 23/04-12/07

⊕ Incubation
16 to 22 h
37 ± 1 °C

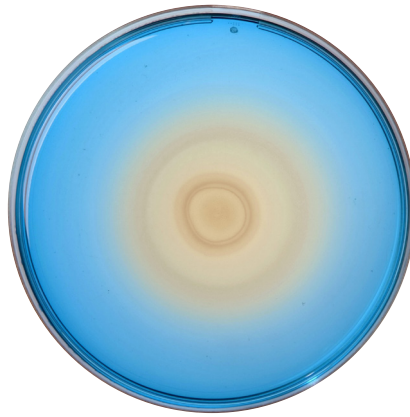
25 g of sample in 225 mL
Salmonella Enrichment broth ¹



D +1

Deposit 3 drops of the enrichment (i.e. 0.1 mL)
on the centre of the plate of **SESAME *Salmonella* Detection** ²

⊕ Incubation
24 ± 3 h
41.5 ± 1 °C



D +2

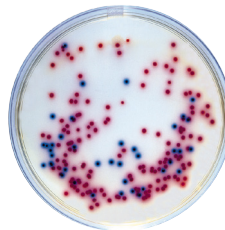
Detection and confirmation ³

Whitish opaque halo < 30 mm ⁴ :
ABSENCE of *Salmonella*

Whitish opaque halo ≥ 30 mm ⁴ :
**PRESUMPTIVE PRESENCE
of *Salmonella***

Plate on **COMPASS *Salmonella* Agar**®

⊕ Incubate 24 ± 3 h at 37 ± 1 °C



Magenta colonies
characteristic of *Salmonella*

To know

SESAME *Salmonella* TEST® allows the detection of motile *Salmonellae* which are involved in most of the contaminations.

¹ **Salmonella Enrichment** may be used for the preparation of dilutions.

² **SESAME *Salmonella* Detection** may be used as second medium in the framework of the NF EN ISO 6579.

³ Plates can be stored during 72 hours at 4°C before reading or performing possible confirmation.

⁴ The development of whitish opaque halo is measured from the inoculation point. Presumptive presence of *Salmonella* is characterized by a diameter of halo greater or equal to 30 mm.

For more information, please refer to the technical data sheet.

To order

Salmonella Enrichment

BK194HA - 500 g vial
BK194GC - 5 kg drum
BM13608 - 10 vials of 225 mL
BM13708 - 3 flexible bags 3 L
BM14408 - 2 flexible bags 5 L

Salmonella Enrichment + Tween®80

BM16308 - 3 flexible bags 3 L

SESAME *Salmonella* Detection

BM14108 - 20 Petri dishes (Ø 90 mm)
BM15008 - 120 Petri dishes (Ø 90 mm)
BM13808 - 10 vials of 200 mL
BK195HA - 500 g vial

COMPASS® *Salmonella* Agar

BM06608 - 20 Petri dishes (Ø 90 mm)