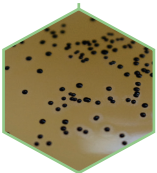


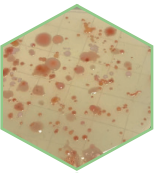
# CONTACT PLATE

*Detection and enumeration of bacteria, yeasts and molds on control areas*



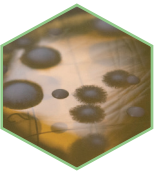
## **QUALITY**

Good holding of agar



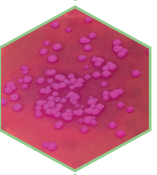
## **SIMPLE**

Ready-to-use method, easy to implement in the field



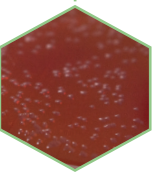
## **FLEXIBILITY OF USE**

Can be used manually or with an applicator.



## **SAFETY**

Attached lid



## **READING COMFORT**

Inkjet print on the edge of the plate for better readability. Grid box for easy counting

# CONTACT Plate

Detection, enumeration of bacteria, yeasts and molds in control areas

Select the appropriate culture medium for the micro-organism of interest (see table below).

Apply the agar to the surface to be sampled and exert a defined pressure for a defined period of time (e.g. 500g for 10 seconds), for a better reproducibility (NF EN ISO 18 593).

⊕ Incubate the dishes in an incubator at the temperatures indicated in the table below, depending on the microorganisms of interest.

Count the characteristic colonies and divide by the surface area of the agar (about 25cm<sup>2</sup>) then deduce the number of colonies per square centimetre of surface area.

## To order

### Ready-to-use media:

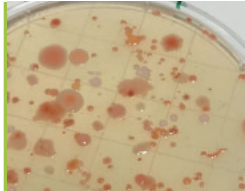

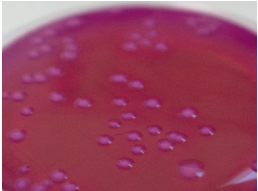
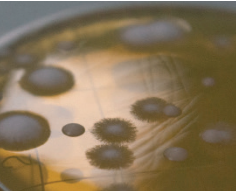
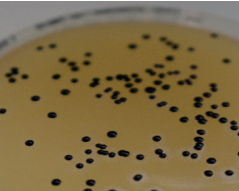
Contact PCA (TTC + Neutralizers)  
BM20608 - 20 plates Ø 65 mm

Contact VRBG (+ Neutralizers)  
BM20708 - 20 plates Ø 65 mm

Contact VRBL (+ Neutralizers)  
BM20908 - 20 plates Ø 65 mm

Contact SDCA (+ Neutralizers)  
BM21008 - 20 plates Ø 65 mm

Contact Baird-Parker (+ Neutralizers)  
BM21108 - 20 plates Ø 65 mm

	Contact PCA (TTC + Neutralizers) Ref : BM20608	Contact VRBG (with Neutralizers) Ref : BM20708	Contact VRBL (with Neutralizers) Ref : BM20908	Contact SDCA (with Neutralizers) Ref : BM21008	Contact Baird-Parker (with Neutralizers) Ref : BM21108
Micro-organism of interest	Total Flora	Enterobacteriaceae	Coliforms	Yeasts and molds	Coagulase-positive staphylococci
Incubation time and temperature	30°C 48 to 72h	37 ± 1°C 24 ± 2h or 30-35°C 18 to 24 h <sup>1</sup>	30, 37 or 44°C 24h <sup>1</sup>	20 to 25°C 3 to 5 days	35 or 37 °C or at 30-35°C 24 to 48h <sup>1</sup>
Medium lecture	Count all the colonies. The majority of bacteria reduce TTC and produce colored colonies.	Count all pink to red colonies, sometimes surrounded by a purple halo of precipitated bile salts.	Count all pink to red colonies, sometimes surrounded by a purple halo of precipitated bile salts.	Count all colonies.	Count all grey or black colonies typically surrounded by a clear halo.
Culture medium photo					

<sup>1</sup> Refer to the data sheet for more details.