



CCI agar

DETECTION OF *CRONOBACTER* SPP. IN HUMAN AND ANIMAL FOOD PRODUCTS AND ENVIRONMENTAL SAMPLES OF PRODUCTION AREA

RELIABLE

Formulated according to NF EN ISO 22964 standard

PERFORMANT

Selective detection of *Cronobacter* spp. in all types of samples

RAPID

Negative screening in 60 hours

SIMPLE

Easy reading of clearly visible blue-green characteristic colonies

CCI agar

Method of detection of *Cronobacter* spp. in human and animal food products and environmental sample of production area

⊕ Incubation

18 ± 2 h
36 ± 2 °C



10 g or mL of sample in 90 mL of **Buffered Peptone Water** ¹

D +1

0.1 mL in 10 mL **CSB broth**

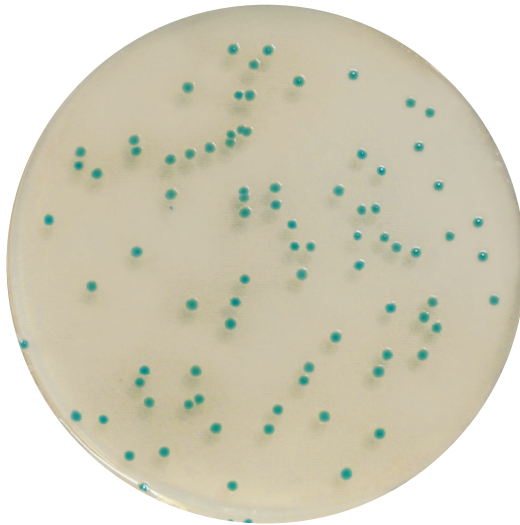


⊕ Incubation

24 ± 2 h
41.5 ± 1.0 °C

Plate ² on **CCI agar**

D +2



⊕ Incubation

24 ± 2 h
41.5 ± 1.0 °C

D +3

Detection and confirmation ³

Blue-green colonies of 1 to 3 mm :
PRESUMPTIVE PRESENCE
of *Cronobacter* spp.

Re-streak on **TSA**

⊕ Incubation **18 to 24 h at 37 ± 1 °C**

Biochemical tests

To know

The combination of **CSB broth** and **CCI agar** ensures an optimal result for the selective detection of *Cronobacter* spp. in all types of samples.

¹ For large quantities, prewarm the buffered peptone water at 36 ± 2 °C.

² Inoculate 10 µL the enrichment by streaking.

³ Select 5 characteristic colonies and re-streak onto a non-selective agar such as TSA.

For more information, please refer to the technical data sheet.

To order

Buffered peptone water

BK018HA - 500 g vial (25.5 g/L)
BK018GC - 5 kg drum (25.5 g/L)
BK131HA - 500 g vial (20 g/L)
BK131GC - 5 kg drum (20 g/L)
BM01008 - 10 vials 225 mL
BM13108 - 3 flexible bags 3 L
BM13208 - 2 flexible bags 5 L

CSB broth

BM15508 - 50 tubes 10 mL

CCI agar

BM15408 - 20 Petri dishes (Ø90 mm)

Trypto-caseine soy agar (TSA)

BM05008 - 20 Petri dishes (Ø90 mm)
BM01708 - 10 vials 100 mL
BM04908 - 10 vials 200 mL
BK047HA - 500 g vial